

**ASTA DOOR CORPORATION
CLEARANCE REQUIREMENTS**

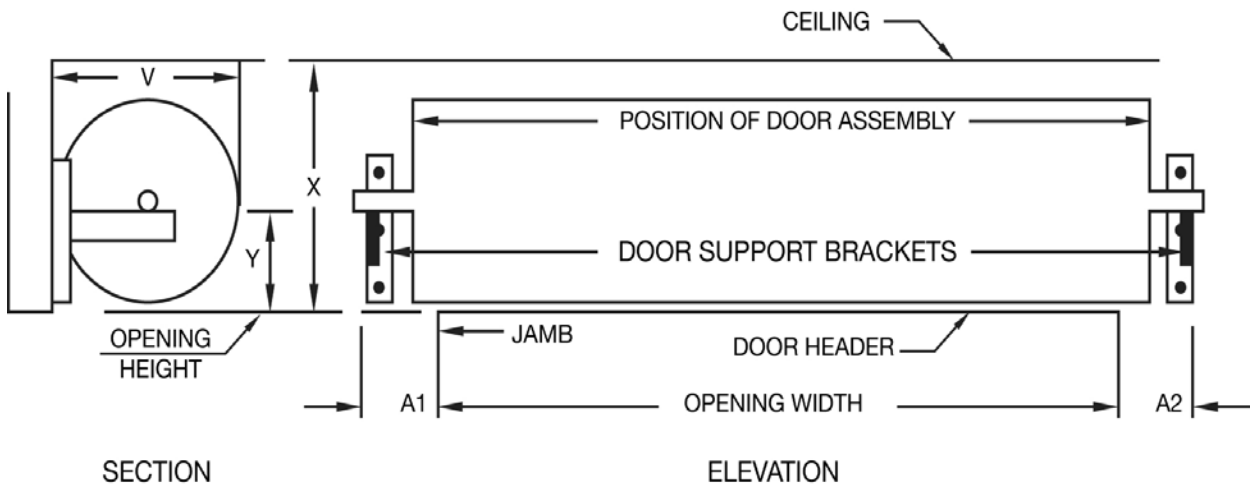
MODELS 201, 201HD, 202, 202HD, 203, 204, 205, 211, 211HD, 231, 231HD, 232, 232HD, 233, 234, and 235

DIMENSION PANEL (MINIMUM HEIGHTS INDICATED)

	HEIGHT	*A-1	*A-2	X	Y	V
MANUAL/ PUSH-UP ROPE	UP TO 8'	6"	6"	20"	9 1/2"	20"
	UP TO 10'	6"	6"	21"	10"	21"
REDUCTION GEAR CHAIN HOIST OR ELECTRIC OPERATOR	UP TO 8'	6"	10"	20"	10"	20"
	UP TO 10'	6"	10"	21"	11"	21"
	UP TO 16'	6"	10"	23"	11"	23"
	UP TO 20'	6"	10"	24"	12"	24"

*SIDE ROOM - FOR DOORS 12'-1" WIDE OR WIDER ADD 1" TO A-1.

*A-2 DIMENSION IS CLEARANCE DIMENSION FOR EITHER CHAIN HOIST OR MOTOR OPERATOR.



CEILING: LOCATE DIMENSIONS AND CLEARANCE ON DIMENSION PANEL. STANDING ON THE INSIDE FACING OUT. DRIVE TYPE IS ON RIGHT SIDE UNLESS OTHERWISE SPECIFIED.

**CLEARANCE REQUIREMENTS
MODEL 281, 281W, 282, 283, 283-14, 284**

	HEIGHT	A-1	A-2	X	V
MANUAL/ PUSH-UP ROPE	UP TO 8'	5"	5"	16"	17"
	UP TO 10'	5"	5"	17"	18"