

ELEVATION

SECTION-A-A

SIDE ROOM REQUIREMENTS

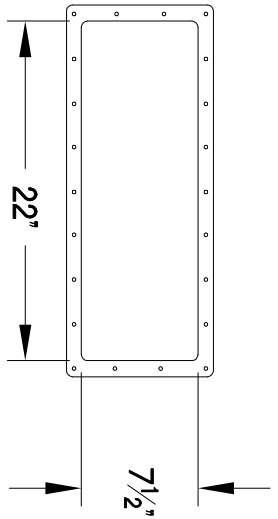
- CHOOSE TYPE OF OPERATION BELOW
- HAND-ROPE PULL
- REDUCTION GEAR CHAIN HOIST
- ELECTRIC MOTOR OPERATOR KIT

SEE 'ELEVATION'

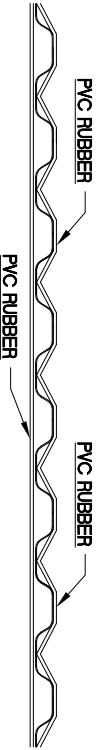
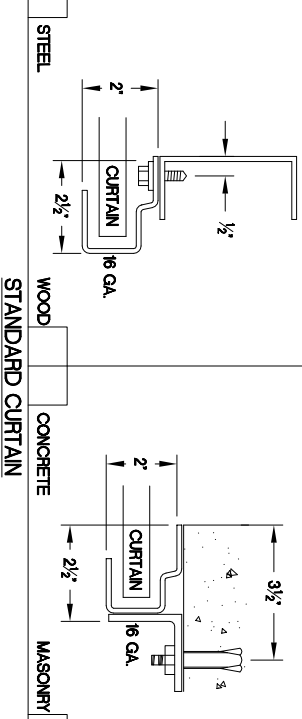
- A-1
- A-2
- 6'
- 6'
- 6'
- 10'
- 6'

MARK	QTY.	OPENING SIZE	OPERATION	RH	CLEARANCES	OPTION
		WIDTH 'W'		LH	'X'	'V'
		HEIGHT 'H'				

VISION LITE DETAIL (OPTIONAL)



GUIDE DETAILS



GENERAL NOTES:

- CURTAIN:**
 - 26 GAUGE GALVANIZED STEEL WITH BAKED ON EPOXY PRIMER AND POLYESTER TOP COAT
- GUIDES:**
 - ROLL FORMED 16 GAUGE GALVANIZED STEEL.
- OPERATION:**
 - RIGHT HAND SHOWN, LEFT HAND OPPOSITE
- OTHER SURFACES:**
 - GALVANIZED OR SHOP COAT PRIMER

PROJECT: _____

ARCHITECT: _____

CONTRACTOR: _____

DISTRIBUTOR: _____

DATE: _____

SHEET: _____ OF _____

BY: _____

REF # _____

MODEL 201 COMMERCIAL SHEET DOOR



4255 McEver Industrial Dr.
 Acworth, GA 30001
 PH(770) 924-2800
 Fax(770) 974-1455
 www.astadoor.com

Asta Door Corporation is not responsible for the use of improper installation procedures, structural supports as well as field inspection prior to manufacturing and installation.

APPROVAL SIGNATURE: _____

DATE: _____