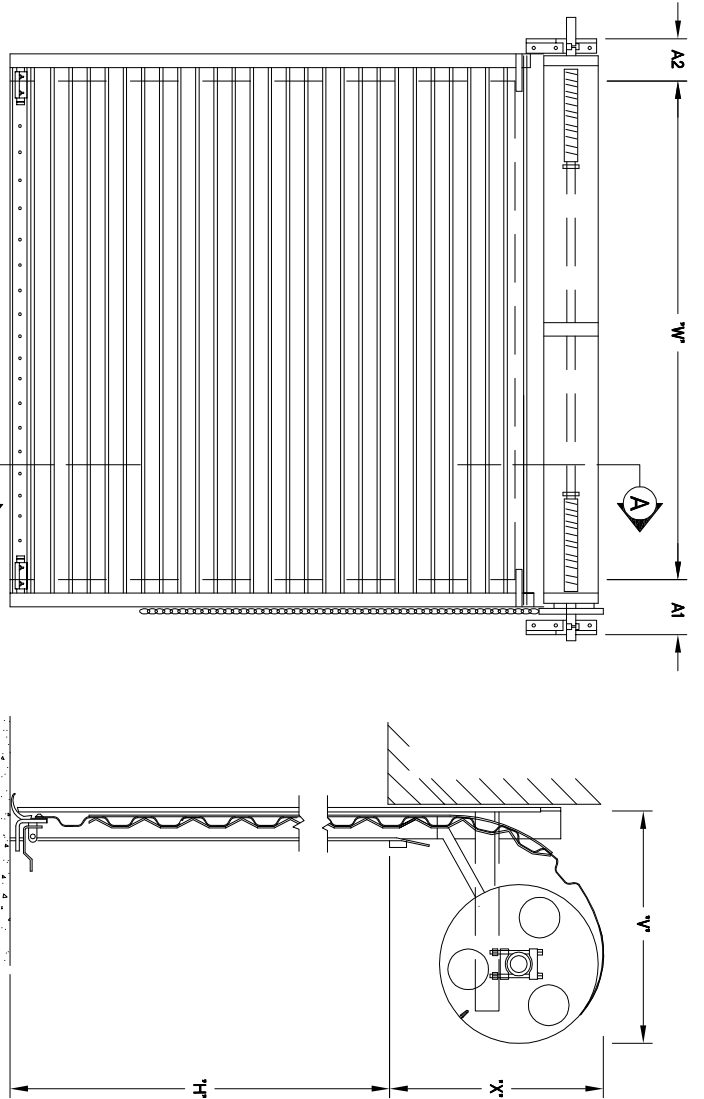
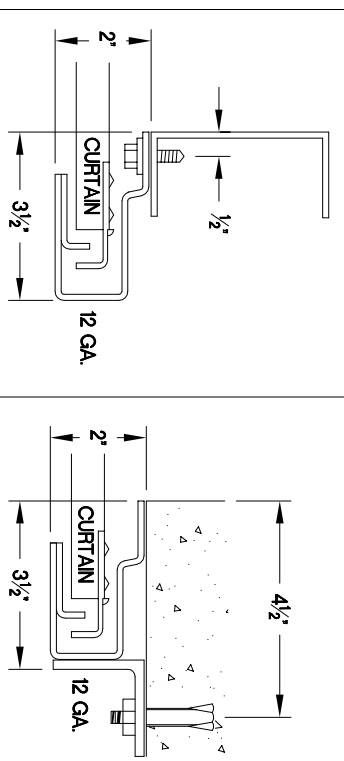


GUIDE DETAILS



SIDE ROOM REQUIREMENTS

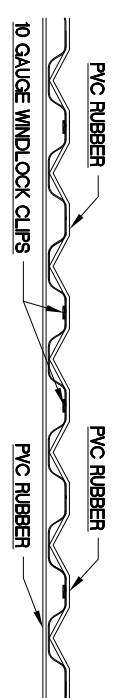
<input type="checkbox"/>	CHOOSE TYPE OF OPERATION BELOW	A-1	A-2
<input type="checkbox"/>	HAND-ROPE PULL	7	7
<input type="checkbox"/>	REDUCTION GEAR CHAIN HOIST	10'	7
<input type="checkbox"/>	ELECTRIC MOTOR OPERATOR KIT	10'	7

SEE 'ELEVATION'

MARK	QTY.	OPENING SIZE	OPERATION	RH	CLEARANCES	OPTION
		WIDTH "W"		LH	X"	Y"
		HEIGHT "H"				

GENERAL NOTES:

- CURTAIN:
- 26 GAUGE GALVANIZED STEEL WITH BAKED ON EPOXY PRIMER AND POLYESTER TOP COAT
- GUIDES:**
- ROLL FORMED 12 GAUGE GALVANIZED STEEL WITH 12 GAUGE WINDLOCK INSERT
- OPERATION:**
- RIGHT HAND SHOWN, LEFT HAND OPPOSITE
- OTHER SURFACES:**
- GALVANIZED OR SHOP COAT PRIMER



ASTA Door Corporation

4255 McEver Industrial Dr.
Acworth, GA 30101
PH:(770) 924-2800
Fax:(770) 974-1455
www.asta-door.com

PROJECT: _____

ARCHITECT: _____

CONTRACTOR: _____

DISTRIBUTOR: _____

DATE: _____

SHEET: _____ OF: _____

BY: _____

REF.# _____

MODEL 203 WINDLOCK COMMERCIAL SHEET DOOR

Asta Door Corporation is not responsible for the use of improper installation procedures, structural supports as well as field inspection prior to manufacturing and installation.

APPROVAL SIGNATURE: _____ DATE: _____