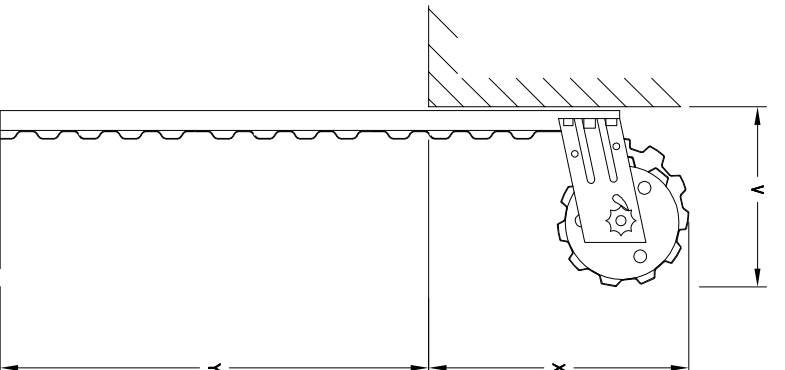
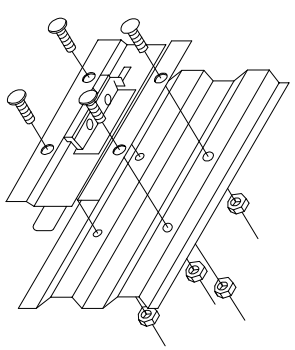


ELEVATION

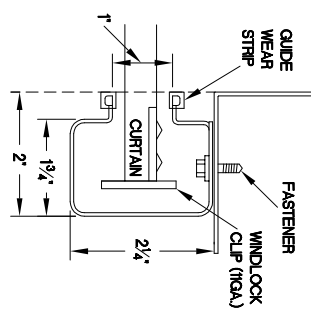


SECTION-A-A

OPERATION	A1	A2
MANUAL PUSH-UP	3 1/4"	3 1/4"

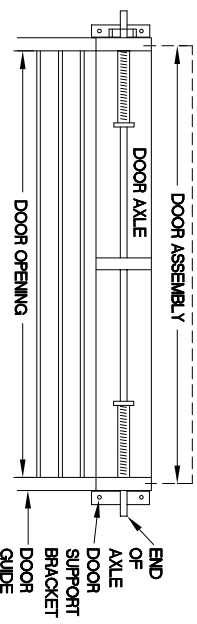


ELEVATION DETAIL



MODEL 281 MINI LOCK ASSEMBLY

GUIDE DETAIL



CLEARANCE REQUIREMENTS

OPENING HEIGHT	HEADROOM		SIDEROOM (PER SIDE)	
	(X)	(Y)	BACK OF GUIDES	OUTSIDE OF BRACKET
UP TO 8'	16"	17"		3 1/4"
UP TO 10'	17"	18"		5"

GENERAL NOTES:

- CURTAIN:
- 26 GAUGE GALVANIZED STEEL WITH BAKED ON EPOXY PRIMER AND POLYESTER TOP COAT
- GUIDES:**
- ROLL FORMED 18 OR 14 GAUGE GALVANIZED STEEL WITH 11 GAUGE WINDLOCK INSERT
- OPERATION:**
- RIGHT HAND SHOWN, LEFT HAND OPPOSITE
- OTHER SURFACES:**
- GALVANIZED

MARK	QTY.	OPENING SIZE	OPERATION	RH	OPTION	PROJECT:	DATE:	SHEET:	OF:	BY:	REF.#
		WIDTH "W"	HEIGHT "H"	LH		ARCHITECT:	MODEL 283-14 MINI/SELF STORAGE WINDLOCK SHEET DOOR				
						CONTRACTOR:					
						DISTRIBUTOR:					
						ASTA Door Corporation					
						4255 McEver Industrial Dr. Acworth, GA 30101 PH:(770) 924-2800 Fax:(770) 974-1455 www.astadoor.com					

ASTA Door Corporation is not responsible for the use of improper installation procedures, structural supports as well as field inspection prior to manufacturing and installation.

APPROVAL SIGNATURE: _____ DATE: _____